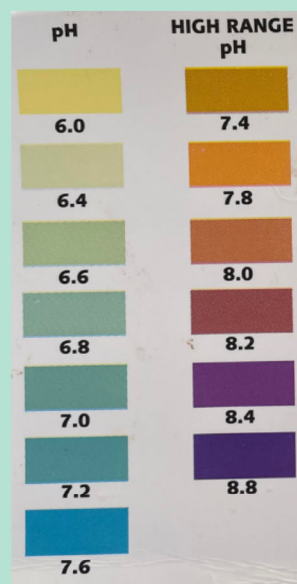
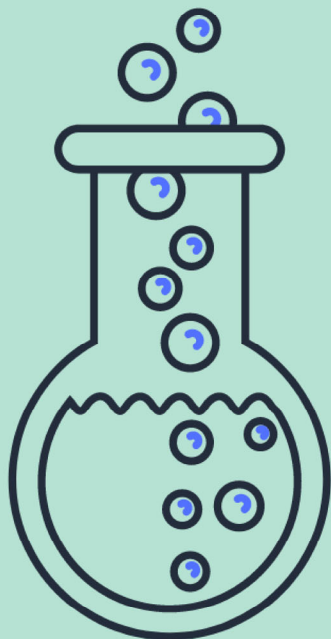


HOW TO TEST FOR PH

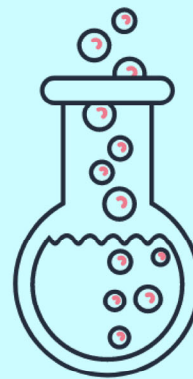
YOU WILL WANT TO START WITH 2 VIALS TO HAVE A VIAL READY IN CASE IT INDICATES A 7.6. IF IT DOES, YOU WILL HAVE TO USE THE HIGH RANGE PH TEST.

1. TAKE 2 EMPTY VIALS, AND CLEAN THEM OUT WITH WATER
2. FILL BOTH VIALS WITH WATER FROM THE SOURCE TO THE MID-LINE
3. DROP 3 DROPS OF THE PH TEST SOLUTION, 5 IF IT IS THE HIGH RANGE PH TEST
4. CAP THE TEST TUBE, AND SHAKE FOR 30 SECS
5. AFTER SHAKING, COMPARE THE COLOR TO THE TEST CHART



TEST ONCE A WEEK FOR THE PH OF THE SOURCE OF SUBSTANCE.

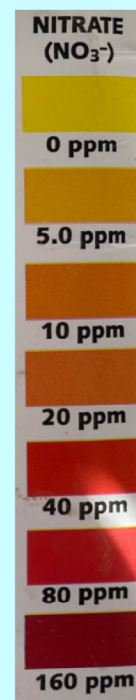
HOW TO TEST FOR NITRITES AND NITRATES



THIS IS 2 SEPERATE TESTS, SO FOLLOW ACCORDINGLY.

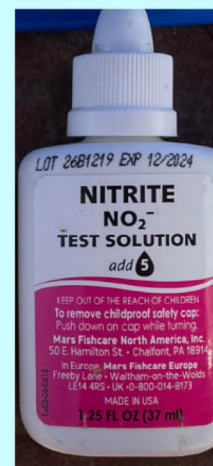
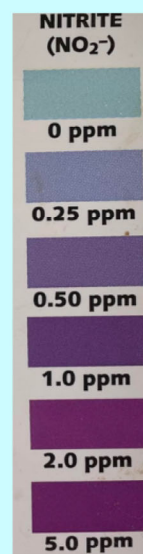
NITRATE TEST

1. TAKE 2 EMPTY VIALS, AND CLEAN THEM OUT WITH WATER
2. FILL BOTH VIALS WITH WATER FROM THE SOURCE TO THE MID-LINE
3. DROP 10 DROPS OF NITRATE TEST SOLUTION #1
4. CAP THE TEST TUBE, AND SHAKE FOR 30 SECS
5. SHAKE NITRATE TEST SOLUTION #2
6. DROP 10 DROPS OF NITRATE TEST SOLUTION #2
7. CAP THE TEST TUBE, AND SHAKE FOR 1 MIN
8. AFTER 5 MINUTES, COMPARE THE COLOR TO THE TEST CHART

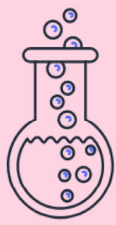


NITRITE TEST

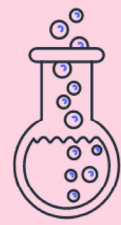
1. TAKE 1 EMPTY VIALS, AND CLEAN IT OUT WITH WATER
2. FILL THE VIAL WITH WATER FROM THE SOURCE TO THE MID-LINE
3. DROP 5 DROPS OF NITRITE TEST SOLUTION
4. CAP THE TEST TUBE, AND SHAKE FOR 5 SECS
5. AFTER 5 MINUTES, COMPARE THE COLOR TO THE TEST CHART



TEST ONCE EVERY 2 WEEKS TO ONCE A WEEK.

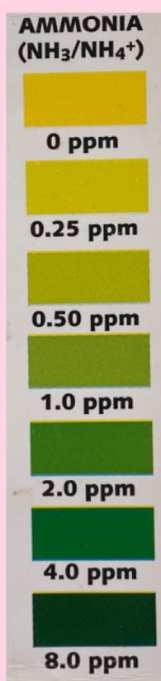


HOW TO TEST FOR AMMONIA



MAKE SURE TO NOT SQUEEZE THE BOTTLE WHILE DROPPING THE DROPS TO PREVENT EXCESSIVE AMOUNT OF DROPS

1. TAKE 2 EMPTY VIALS, AND CLEAN THEM OUT WITH WATER
2. FILL BOTH VIALS WITH WATER FROM THE SOURCE TO THE MID-LINE
3. DROP 8 DROPS OF AMMONIA TEST SOLUTION #1
4. DROP 8 DROPS OF AMMONIA TEST SOLUTION #2
5. CAP THE TEST TUBE, AND SHAKE FOR 30 SECS
6. AFTER SHAKING, COMPARE THE COLOR TO THE TEST CHART



TEST ONCE
A WEEK
FOR THE
AMMONIA
OF THE
SOURCE.